



# Instruction Manual

## Hall Throttle Interface Board HIB-DNO

### Contents

Section	Page	Section	Page
1. Description.....	2	4. DNO settings.....	3
2. Mounting.....	2	5. Calibration.....	3
3. Connections.....	2		

## 1. Description

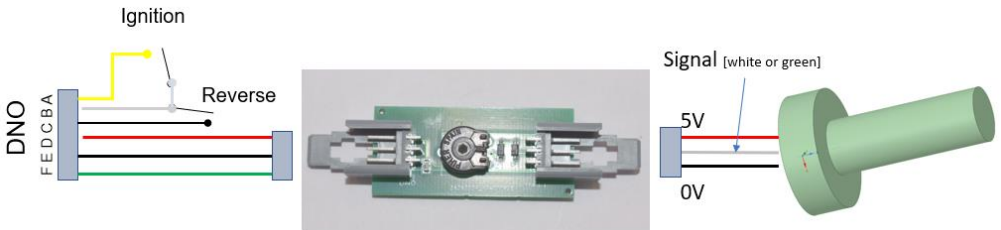
- The HIB-DNO is an adaptor board designed to allow a 5V hall effect throttle to be used with our DNO controllers.

## 2. Mounting

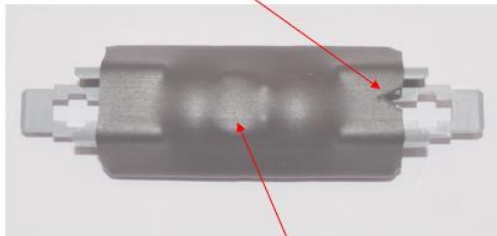
The HIB-DNO goes in the wiring between the throttle and the DNO. It is enclosed in heat shrink tubing and can either be left free floating, or can be secured with a cable tie or double-sided tape if required.

## 3. Connections

The HIB-DNO should be connected as per this diagram...



V shaped cut-out denotes throttle end



Calibration pot under here

## 4. DNO settings

The DNO gain adjustment will need to be turned fully clockwise to allow full speed to be reached.

## 5. Calibration

The HIB-DNO should not require calibration when used with a 5V hall effect throttle that draws around 10mA. If you wish to use a different throttle there is a trimmer potentiometer that can be used to adjust the hall device current, this can be accessed by cutting a small hole in the heat shrink tubing.